

# RECYCLE BC: FULL PRODUCER RESPONSIBILITY

PREPARED FOR THE RECYCLING COUNCIL OF ALBERTA  
JANUARY 2021



**RECYCLEBC**<sup>TM</sup>

---

# AGENDA

---

- Context
- Who we are
- Performance
- Collection
- Post-collection
- Q&A



# CONTEXT

# CURRENT CONTEXT

---

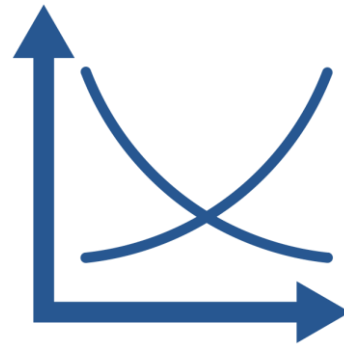
01

CHINA'S  
NATIONAL  
SWORD



02

SUPPLY  
AND  
DEMAND



03

LIMITING,  
STOCKPILING,  
LANDFILLING



# DESIGNED WITH INTENTION



## ENVIRONMENTAL OUTCOMES



MATERIALS



HOMES



DEPOTS



PARTNERSHIPS



TECHNOLOGY

# WHO WE ARE

Recycle BC is a not-for-profit organization responsible for residential packaging and paper recycling throughout British Columbia.

Recycle BC ensures household materials are collected, sorted and responsibly recycled.

Our program is funded by 1,200 businesses that include retailers, manufacturers and restaurants that supply packaging and paper products to BC residents, shifting costs away from homeowners.

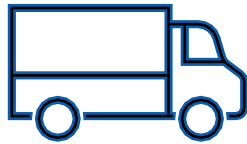


# PARTNERSHIPS

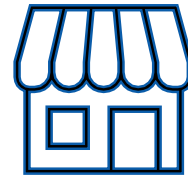
---



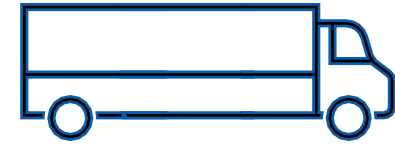
**LOCAL  
GOVERNMENT AND  
FIRST NATIONS**



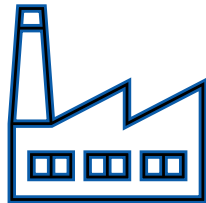
**WASTE  
COMPANIES**



**DEPOTS**



**TRANSPORTERS**



**RECEIVING  
FACILITIES**



**POST-COLLECTION  
PARTNER**



**PRODUCERS**



# PERFORMANCE



# PROGRAM PERFORMANCE:

2019 Program  
Recovery Rate



**237,582**  
tonnes reported by stewards



**207,411**  
gross tonnes collected



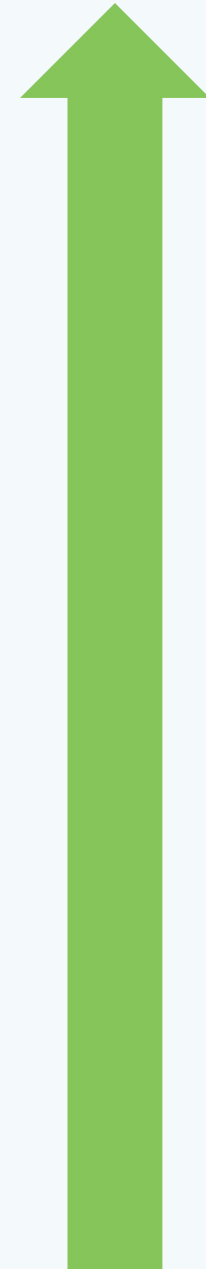
**185,692**  
net tonnes collected\*



**40.5 KG**  
net collected per capita

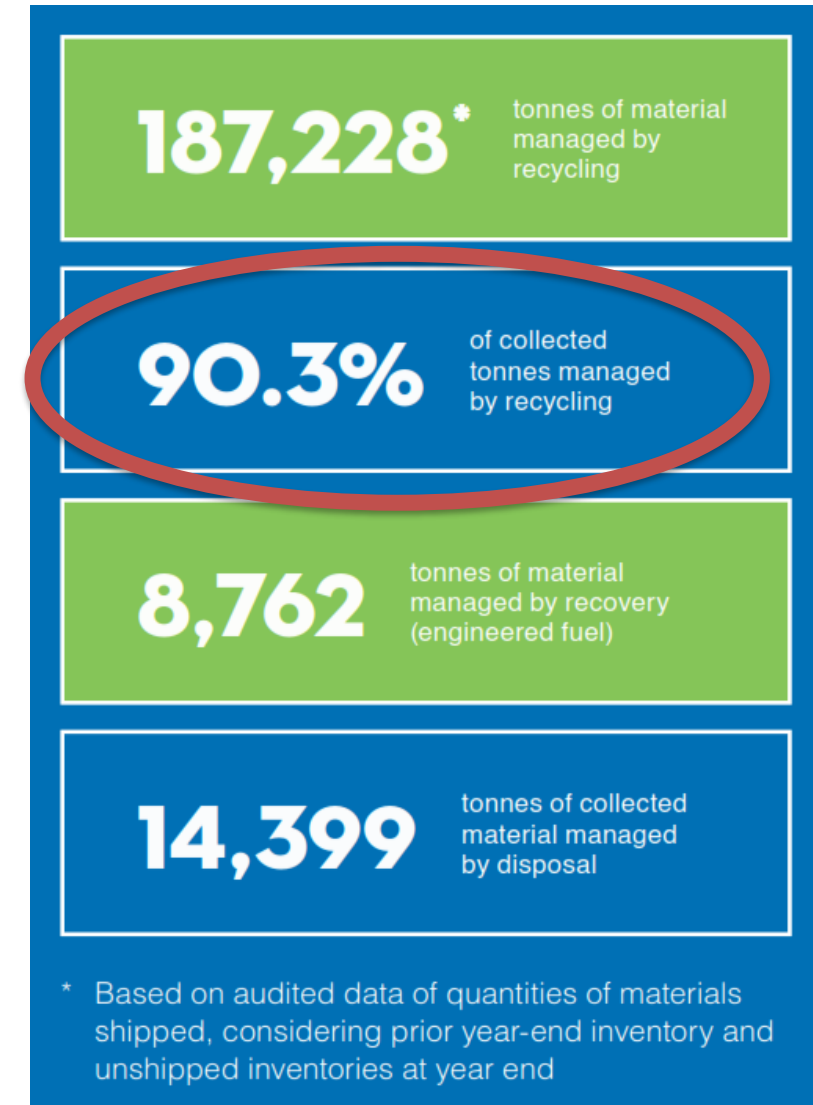


**78.2%**  
recovery rate\*



# POLLUTION PREVENTION HIERARCHY

- 2019 End of Life Reporting
  - Increased tonnes of PPP managed by recycling year-over-year (+4%).
  - Increased tonnes of material managed by engineered fuel.
  - Decreased the tonnes managed by disposal by 14%.
  - More than 90% of collected material was managed by recycling.



# PROGRAM PERFORMANCE: 2019 Material Specific Recovery Rate

MATERIAL CATEGORY	RECOVERY RATE	RESULT
Paper	83%	-3.0%
Plastic	46%	+4.0%
Rigid Plastic	56%	+2.0%
Flexible Plastic	22%	+3.0%
Metal	73%	+6.0%
Glass	87%	+9.0%



# COLLECTION



# RECYCLE BC COLLECTION STREAMS

---



## **CURBSIDE COLLECTION**

Collection from households that set out materials individually for pick-up



## **MULTI-FAMILY COLLECTION**

Collection from a central location in residences with five or more units



## **DEPOT COLLECTION**

Residents drop off their materials

# PROVINCIAL ACCESS





# POST-COLLECTION



# OVERVIEW

## RESPONSIBILITIES:

- Receiving material after collection
  - Transporting material to material recovery facility
  - Sorting material into specific grades or types of materials
  - Marketing materials as commodities to end markets
- 
- One province-wide system allows for economies of scale:
    - Create system to manage consistent materials
    - Investment in advanced sorting technology at select facilities
    - Quantities of material for sale to end markets



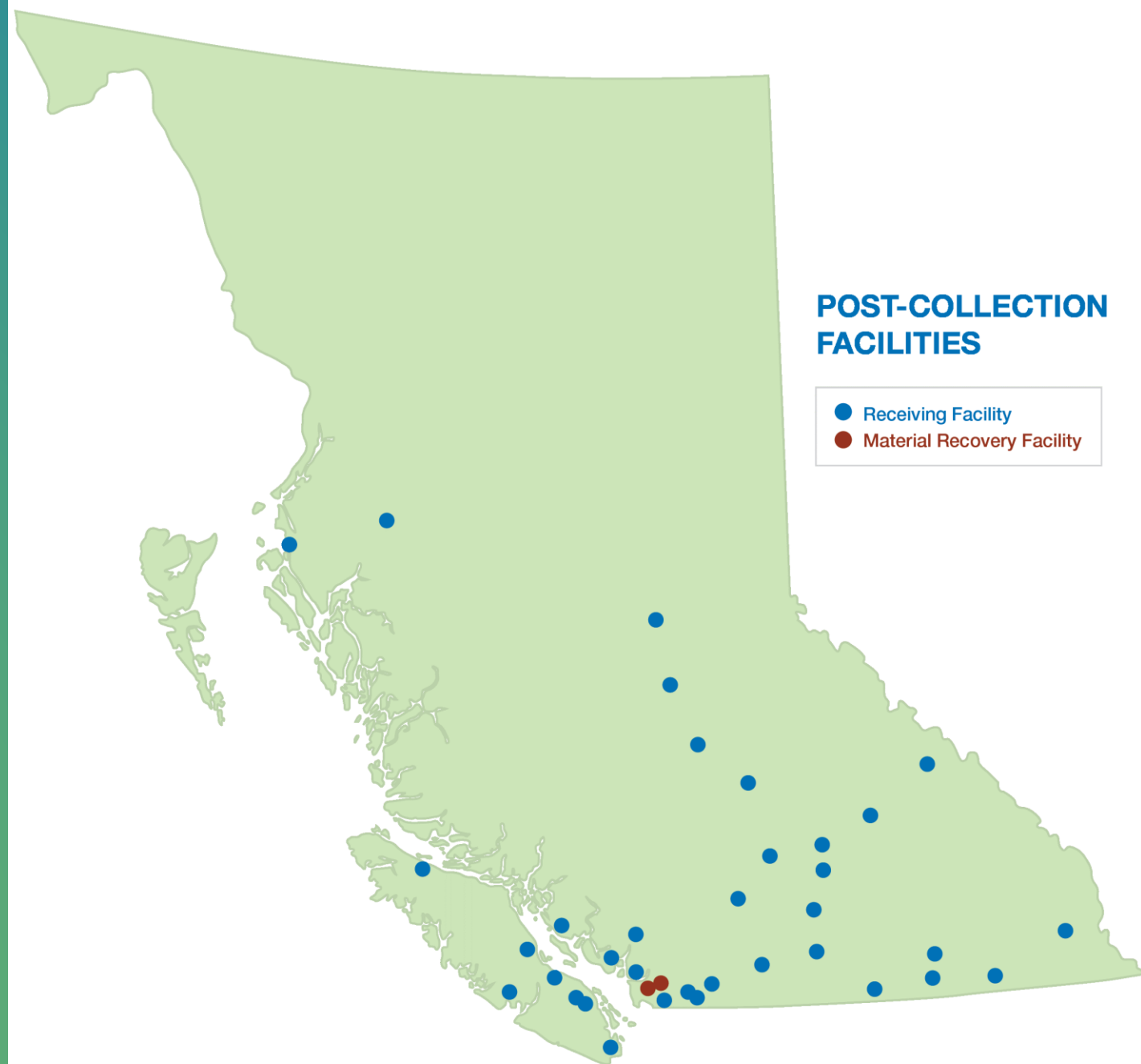
# POST-COLLECTION RFP

- Multi-year competitive tender and selection process
- RFP focused on 5 key outcomes:
  - Investment in recycling infrastructure;
  - System efficiency with minimal redundancy;
  - Prioritization of local end-markets;
  - Clear and transparent business processes; and
  - Ongoing innovation and technology.
- GFL Environmental (GFL) responsible for management of the post-collection contract effective May 2020



# FACILITY NETWORK

- Post-collection facility network:
  - 38 post-collection facilities
  - 36 Receiving Facilities
  - 2 Material Recovery Facilities



# HIGHLIGHTS

- Transition to GFL means enhanced environmental outcomes through:
  - \$25 million investment in new sorting facilities
  - More paper staying local
  - Plastics go to Merlin Plastics, a BC end market
- Supports a local circular economy





# Q & A



**RECYCLEBC™**

*Making a difference together.*



[RecycleBC.ca](https://RecycleBC.ca)



[@RecycleBC](https://twitter.com/RecycleBC)



[@RecycleBC](https://facebook.com/RecycleBC)