



## **Waste Audit Report**

Recycling Council of Alberta (RCA)

Submitted by: - Deepkamal Kaur  
Eza Sebastian

## Table of Contents

<b>1. Executive Summary.....</b>	<b>3</b>
<b>2. Methodology.....</b>	<b>3</b>
<b>3. Waste Composition and Classification.....</b>	<b>4</b>
○ <b>Table 1: Summary of Waste Categories and Net Weights (kg)</b>	
○ <b>Figure 1: Total Waste Composition by Category (kg)</b>	
<b>4. Overall Audit Results and Analysis.....</b>	<b>5-6</b>
<b>5.1 Overall Waste Stream</b>	
○ <b>Table 2: Percentage Breakdown of Waste Streams</b>	
○ <b>Figure 2: Overall Waste Composition at RCA 2025 Conference</b>	
<b>5. Landfill Stream.....</b>	<b>6-7</b>
○ <b>Figure 3: Landfill Materials</b>	
○ <b>Table 3: Breakdown of Landfill Waste Categories</b>	
○ <b>Figure 4: Breakdown of Landfill Waste Categories</b>	
<b>6. Organic Stream.....</b>	<b>8-9</b>
○ <b>Figure 5: Compostable Items</b>	
○ <b>Table 4: Composition of Organic Materials</b>	
○ <b>Figure 6: Composition of Organic Waste Stream</b>	
<b>7. Recycling Streams.....</b>	<b>9-11</b>
○ <b>Figure 7: Recyclable Material</b>	
○ <b>Table 5: Plastic and Paper Recycling Weights</b>	
○ <b>Figure 8: Comparison of Paper and Plastic Recycling Streams at RCA</b>	
<b>8. Refundable &amp; Reuse Stream.....</b>	<b>11-12</b>
○ <b>Table 6: Refundable and Reusable Materials Breakdown</b>	
○ <b>Figure 9: Composition of Refundable and Reusable Materials</b>	
<b>9. Conclusion.....</b>	<b>12</b>

## Executive Summary

The 2025 Recycling Council of Alberta (RCA) Conference, held at Jasper Park Lodge (JPL), focused on advancing waste reduction and sustainability initiatives across Alberta. To evaluate the environmental performance of the event, a comprehensive waste audit was conducted. The primary goal was to determine the total volume of waste generated, identify the composition of materials, and assess the overall diversion rate from landfill through recycling, composting, and reuse.

A total of **69.235 kilograms** of waste was collected, sorted, and categorized into **seven major waste streams**: Organics, Landfill, Plastics, Paper, Beverage Containers, Metal, and Reuse materials. Among these, **Organic waste accounted for 40.73 kg**, representing **approximately 59%** of the total waste generated. **Landfill waste totaled 13.325 kg (19%)**, while **recyclables and reusables collectively made up the remaining 22%**.

Based on these results, the overall **diversion rate** for the event was calculated at **80%**, demonstrating a strong commitment to sustainability and responsible waste management. The high proportion of organic diversion reflects the success of composting systems and attendee participation in proper waste sorting. This performance highlights Jasper Park Lodge's ongoing efforts to support waste reduction and environmentally conscious event practices.

Overall, the waste audit confirms that the RCA 2025 Conference achieved an excellent level of diversion and successfully modeled best practices for sustainable event management in Alberta.

## Methodology

The waste audit was conducted during the RCA 2025 Conference as part of the organization's sustainability initiative. Waste was collected over the event duration and categorized into major streams: landfill, organics, plastics, beverage containers, paper, reuse, and metal.

The audit team hand-sorted all waste at the collection site. Materials were placed into clearly labeled bins according to category and weighed. Visual documentation and notes were taken to identify common contaminants and sorting errors.

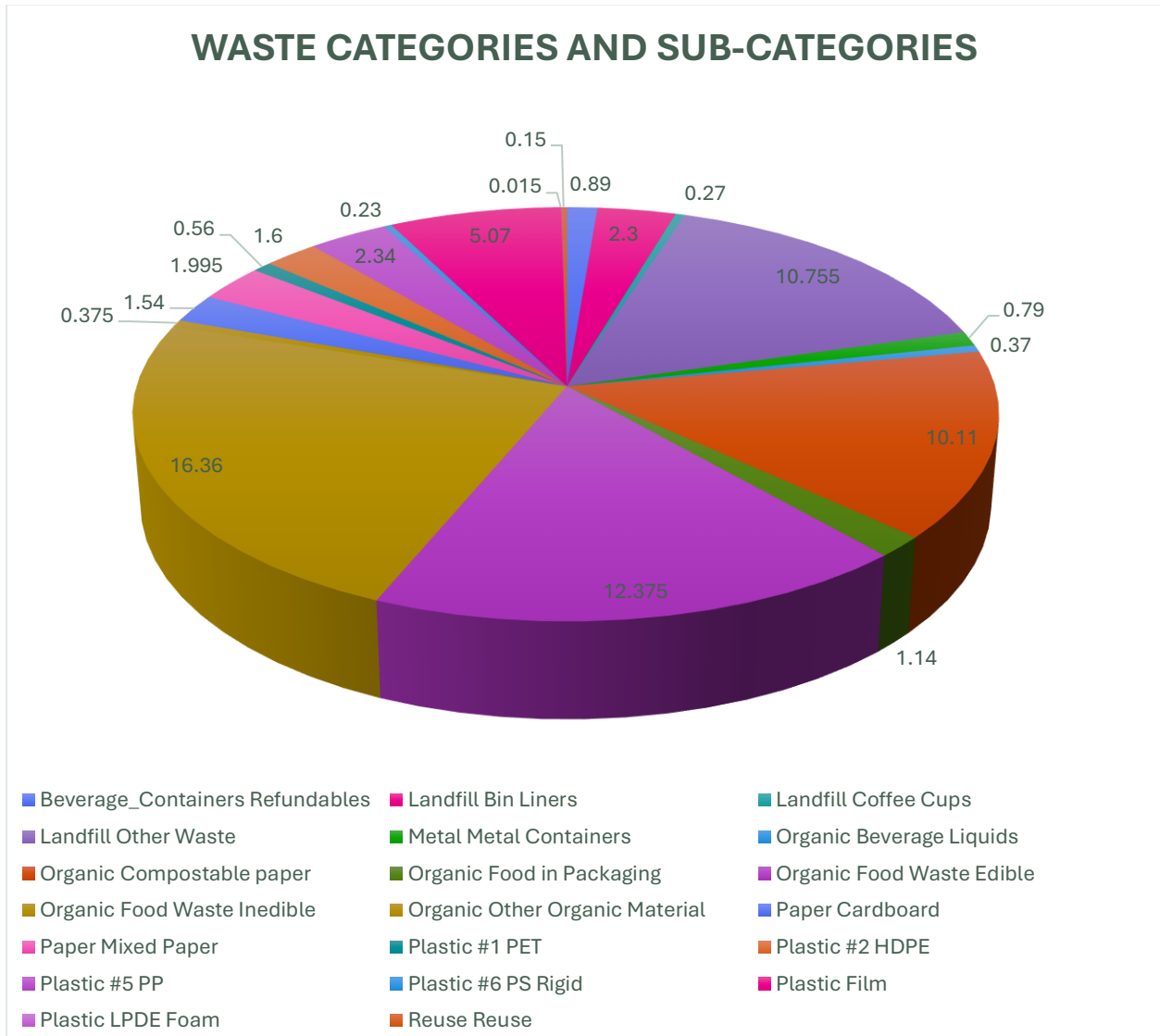
## Waste Composition and Classification

The waste audit classified materials into four primary categories: Landfill/Contamination, Recycling, Organics, and Refundable. Table 2 provides examples of the specific items included within each category.

**Table 1: Summary of Waste Categories and Net Weights (kg)**

Category	Sub-category	Sum of net weight (KG)
<b>Beverage Containers</b>	Refundable	0.89
<b>Beverage Containers Total</b>	-	0.89
<b>Landfill</b>	Bin Liners	2
	Coffee cups	0.27
	Other Waste	10.755
<b>Landfill Total</b>	-	13.325
<b>Metal</b>	Metal containers	0.79
<b>Metal total</b>	-	0.79
<b>Organic</b>	Beverage Liquids	0.37
	Compostable paper	10.11
	Food in Packaging	1.14
	Food Waste Edible	12.375
	Food Waste Inedible	16.36
	Other Organic material	0.375
<b>Organic Total</b>	-	40.73
<b>Paper</b>	Cardboard	1.54
	Mixed Paper	1.995
<b>Paper total</b>	-	3.535
<b>Plastic</b>	#1 PET	0.56
	#2 HDPE	1.6
	#5 PP	2.34
	#6 PS Rigid	0.23
	Film	5.07
	LPDE Foam	0.015
<b>Plastic Total</b>	-	9.815
<b>Reuse</b>	Reuse	0.15
<b>Reuse Total</b>	-	0.15
<b>Grand Total</b>	-	69.235

**Figure 1: Total Waste Composition by Category (kg)**



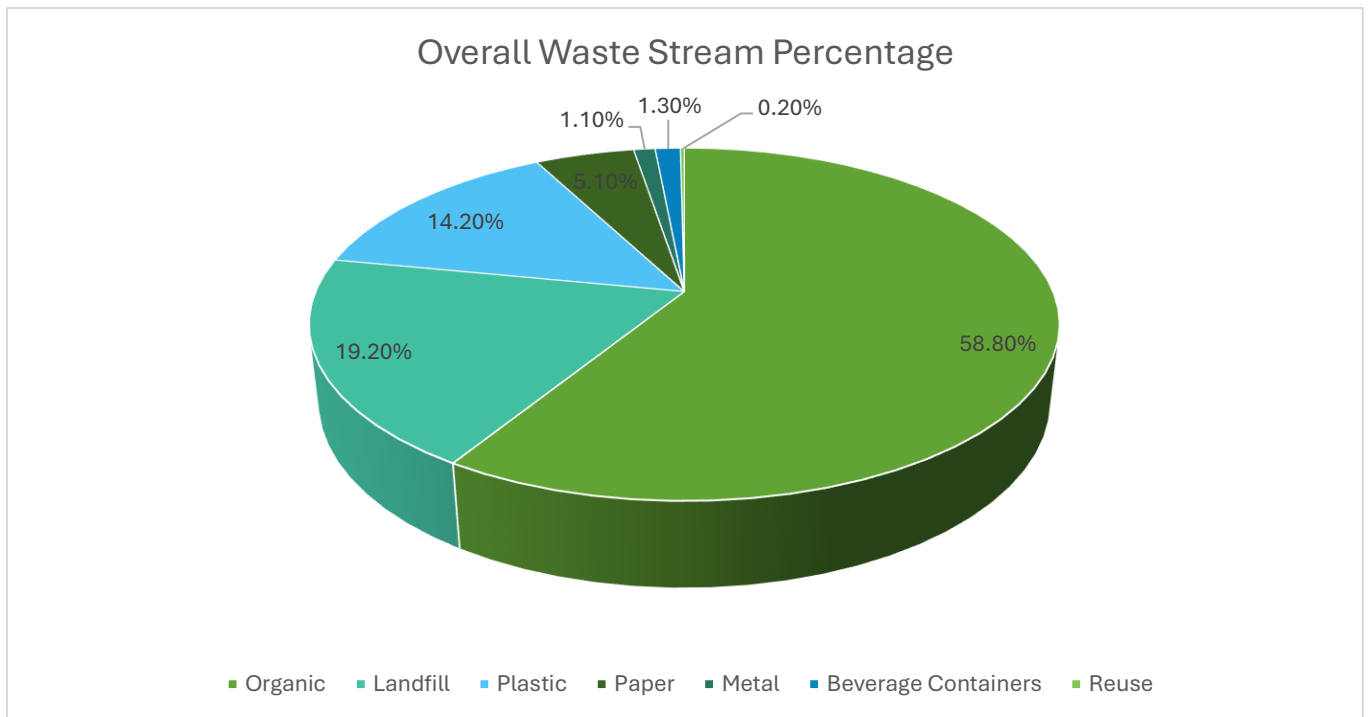
## Overall Audit Results and Analysis

### Overall Waste Stream

The audit results indicate that organic waste dominated the stream (58.8%), followed by landfill (19.2%) and plastics (14.2%). Smaller contributions came from paper, metal, beverage containers, and reusable items.

**Table 2: Percentage Breakdown of Waste Streams**

Waste stream	Percentage of total waste
Organics	58.8%
Landfills	19.2%
Plastic	14.2%
Paper	5.1%
Metal	1.1%
Beverage Containers	1.3%
Reuse	0.2%

**Figure 2: Overall Waste Composition at RCA 2025 Conference**

### Landfill Stream

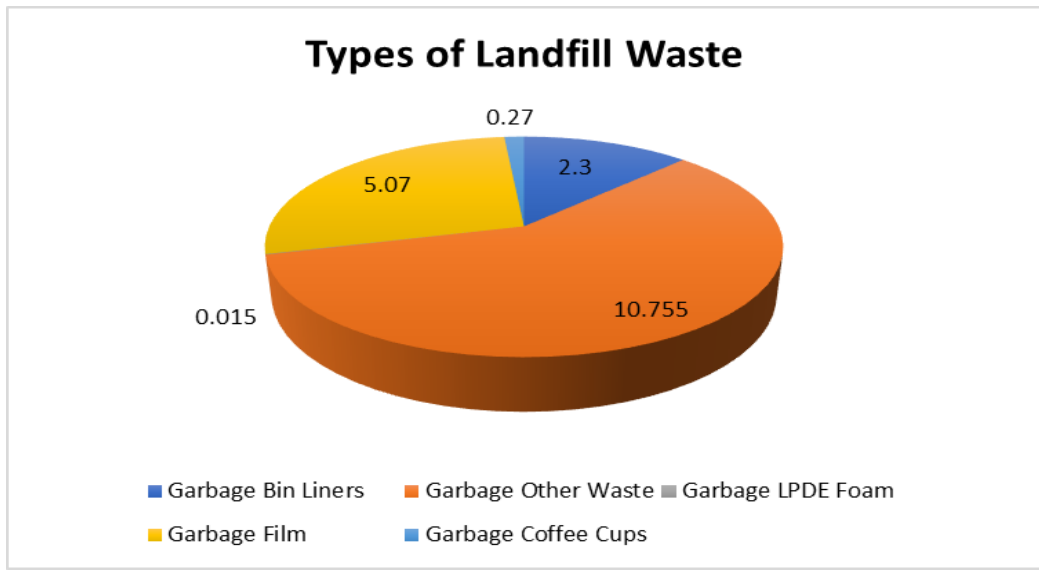
Approximately 19% of the total waste collected during the RCA Conference was directed to the landfill stream. This portion primarily consisted of non-recyclable and contaminated materials, including items such as snack wrappers, coffee cups, and liquid waste. Contamination within this stream was largely due to improper disposal of materials that could have otherwise been diverted through recycling or composting programs. Despite the presence of established diversion systems, these materials were found in landfill bin.

**Figure 3: Landfill Materials**



- *The audit identified 12 coffee cups, which represents a smaller portion of the total waste and suggests limited use or effective reduction practices in this category.*

**Figure 4:** Breakdown of Landfill waste categories



**Organic Stream**

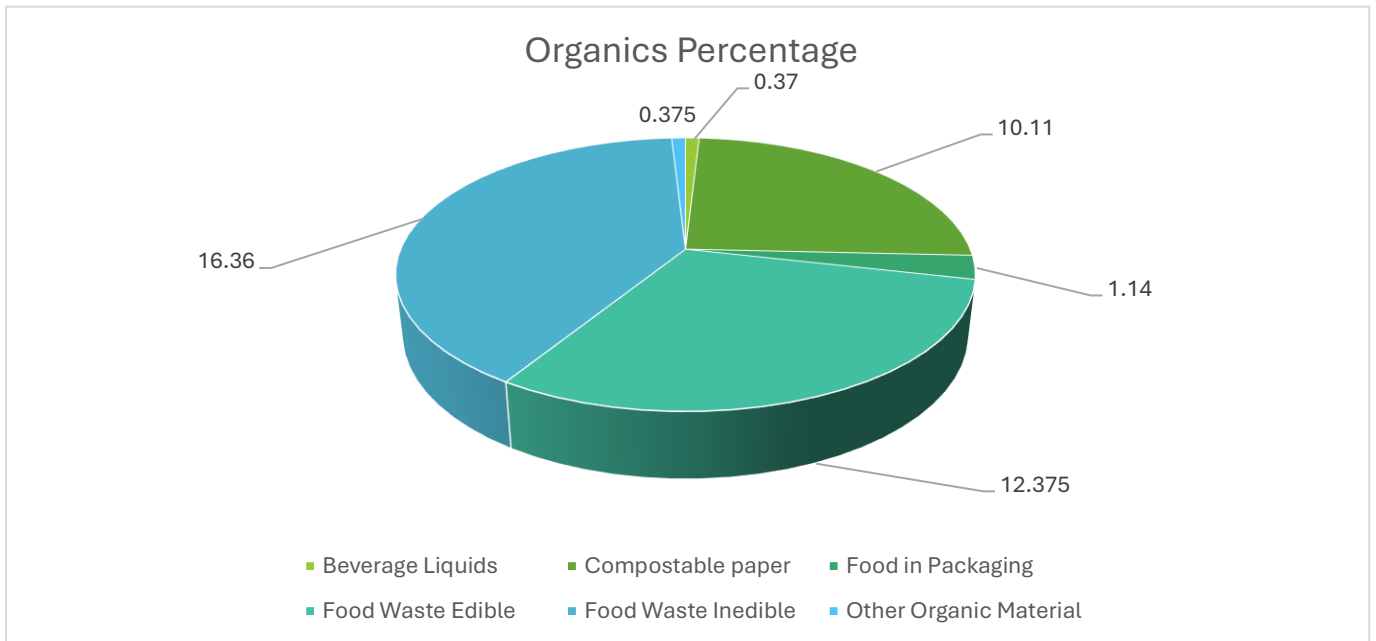
The organic stream accounted for 40.73 kilograms, representing 58.8% of the total waste generated during the audit. This stream included food waste, compostable paper products, and compostable packaging. While the organics program was effective in capturing most compostable materials, contamination was observed, primarily from food waste collected in plastic bags and non-compostable packaging. Such contamination reduces the quality of compostable material and increases the need for additional sorting.

**Figure 5:** Compostable items





**Figure 6: Composition of Organic Waste Stream**



**Recycling Streams**

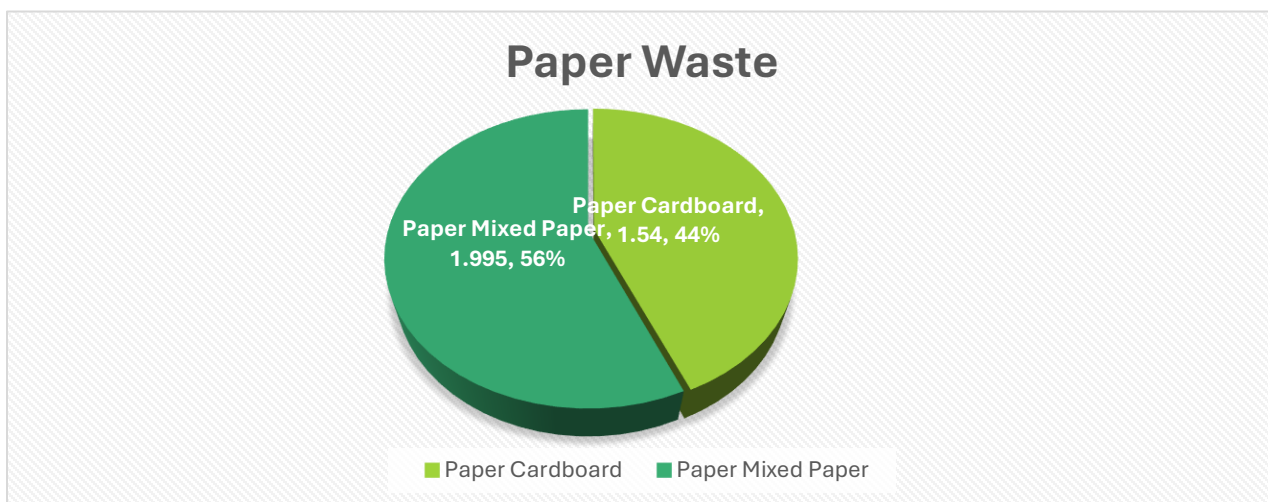
The recycling streams consisted of plastic and paper materials, weighing 9.815 kilograms (14.2%) and 3.535 kilograms (5.1%), respectively. These streams included clean paper, cardboard, and recyclable plastics those were mixed in garbage bags. The estimated capture rate for recyclable materials was approximately 70–80%, indicating that a substantial portion of

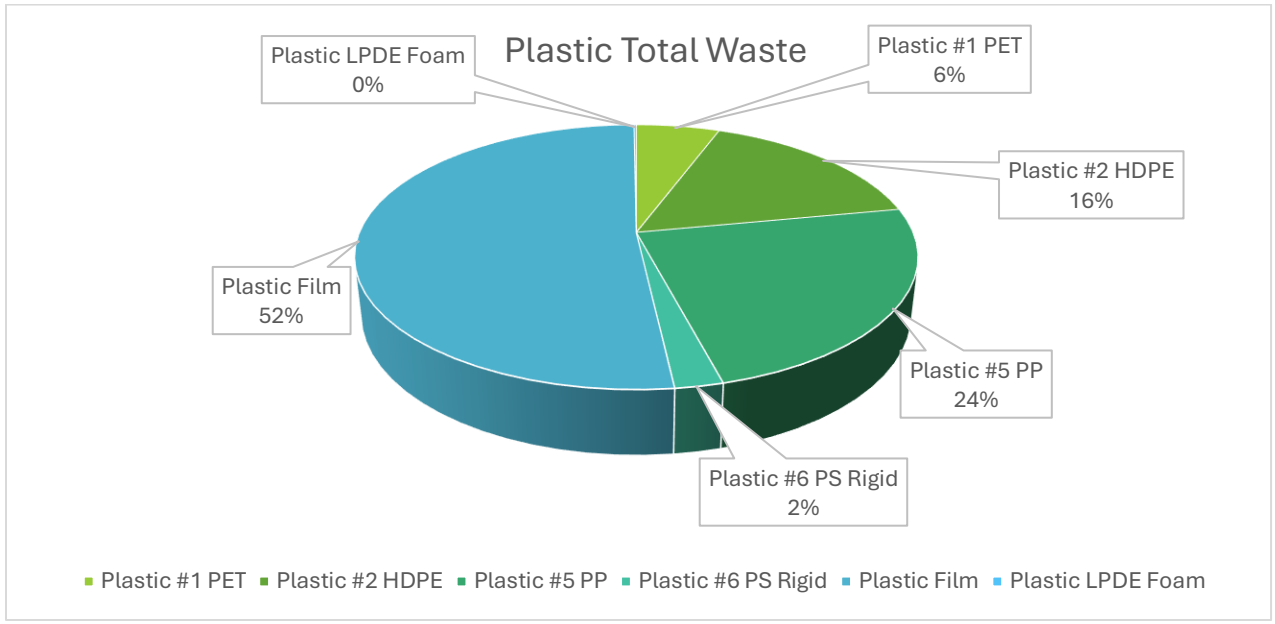
recyclable items was successfully diverted from landfill, though further improvement is possible through clearer communication and collection design.

**Figure 7: Recyclable Material**



**Figure 8: Comparison of Paper and Plastic Recycling Streams at RCA**

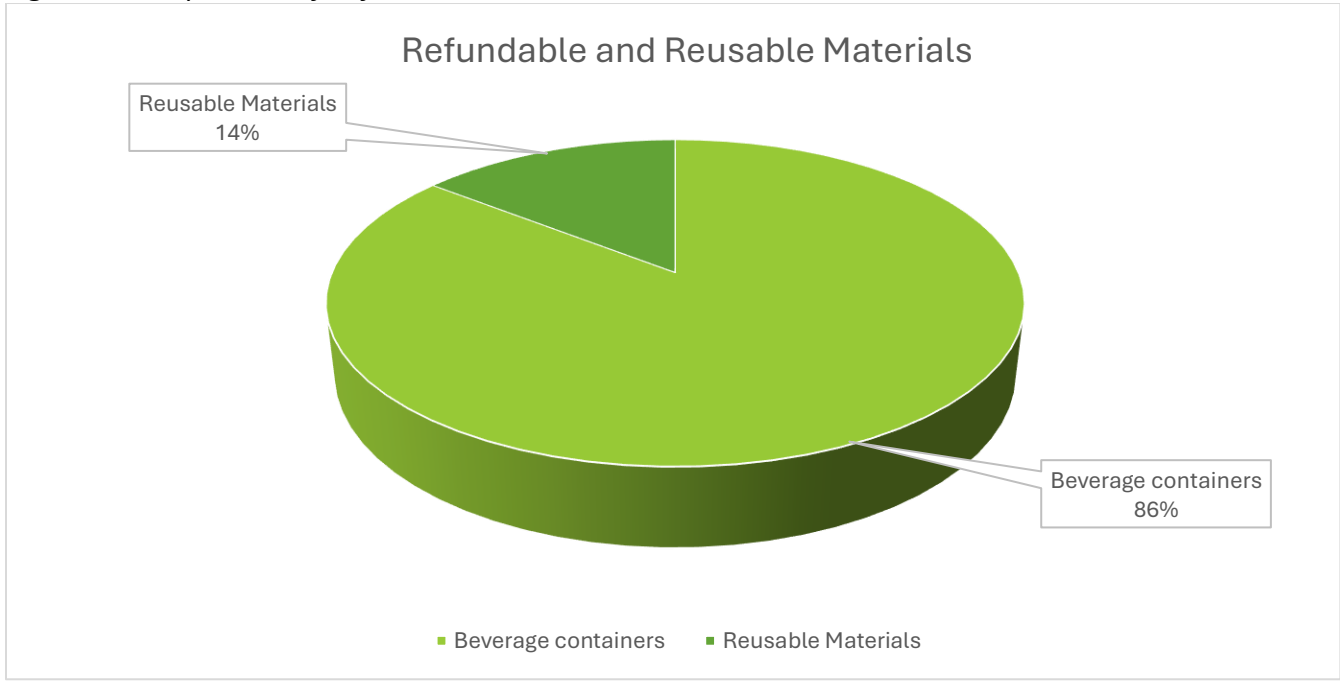




**Refundable & Reuse**

The refundable and reuse stream made up a small portion of the total waste, with 0.89 kilograms of beverage containers and 0.15 kilograms of reusable materials collected. Moreover, RCA promoted waste reduction by encouraging the use of reusable and personal cups throughout the conference, significantly minimizing the number of disposable drink containers generated. This practice reflects RCA’s commitment to sustainable event management and demonstrates the positive impact of proactive waste prevention strategies.

**Figure 9: Composition of Refundable and Reusable Materials**



## **Conclusion**

The waste audit conducted during the RCA Conference provided valuable insight into the event's waste generation and diversion performance. The results highlight a strong commitment to sustainability, with a significant portion of the total waste stream diverted from landfill through effective organic and recycling programs. The prominence of organics in the overall waste composition reflects the event's food-related activities.

The use of reusable and personal cups throughout the conference further emphasized RCA's dedication to reducing single-use items and promoting responsible waste behaviors. Overall, the findings indicate that the RCA Conference successfully integrated waste reduction principles into its operations, setting a positive example of environmental stewardship within Alberta's event community.